



### BZ-2RW82-A2



*Actual product appearance may vary.*

**BZ Series Standard Basic Switch, Single Pole Double Throw Circuitry, 15 A at 125 Vac, Roller Lever Actuator, 0,97 N [3.5 oz] Maximum Operating Force, Silver Contacts, Screw Termination, CE, CSA, DEMKO, UL**

#### Features

- Accepted world-wide standard "Large Basic" switch
- Low operating force and differential travel
- Long mechanical life up to 20,000,000 cycles at 95% survival
- Elongated mounting hole for easier, more accurate mounting
- Current rating ranges from 15 A to 25 A
- Choice of actuation, termination and operating characteristics

#### Potential Applications

- Irrigation systems
- Semi-trailer trucks
- Timing devices
- Office equipment
- Test instruments
- Medical/dental equipment
- HVAC equipment
- Manually operated devices
- Valves

#### Description

MICRO SWITCH™ BZ/BA Series standard basic switches are used for simple or precision on/off application needs.

#### Product Specifications

Product Specifications	
Switch Type	MICRO SWITCH™ Standard 25,4 mm H x 17,8 mm W x 50,8 mm L [1.0 in H x 0.7 in W x 2.0 in L]
Sealed	No
Ampere Rating	15 A
Circuitry	Single Pole Double Throw (SPDT)
Actuator	Roller Lever
Termination	Screw
Operating Temperature Range	-55 °C to 85 °C [-67 °F to 185 °F]
Voltage	125 Vac
Approvals	CE, CSA, UL

Actuator Length	48,26 mm [1.9 in]
Contact Type	Silver
Operating Force (O.F.)	0,97 N [3.5 oz] max.
Release Force (R.F.)	0,21 N [0.75 oz] min.
Overtravel (O.T.)	3,96 mm [0.156 in] min.
Differential Travel (D.T.)	0,10 mm - 1,00 mm [0.004 in - 0.040 in]
Operating Position (O.P.)	30,17 mm $\pm$ 0,38 mm [1.188 in $\pm$ 0.015 in]
Free Position (F.P.)	36,47 mm [1.436 in] max.
Material	Plastic
Housing Material	General Purpose Phenolic
High Temperature	204 °C [400 °F]
CE mark	61058-1
UL File #	E12252
CSA File #	LR41370
Agency Approvals and Standards	1054
Mounting Screw Size	3,53 mm [0.139 in]
Mounting Centers	25,4 mm [1 in]
Maximum Tightening Torque	0,33 N m [3.0 in lb]
Weight	34,5 g [0.076 lb]
Package Height	24,1 mm [0.95 in]
Package Width	17,5 mm [0.69 in]
Package Length	49,3 mm [1.94 in]
Recommended For	48,3 mm [1.9 in] (steel roller) lever applications
Availability	Global
UNSPSC Code	30211905
UNSPSC Commodity	30211905 Snap switches
Series Name	BZ/BA/WA/YZ

# MICRO SWITCH

A DIVISION OF MINNEAPOLIS-HONEYWELL REGULATOR COMPANY  
MINNEAPOLIS, MINNESOTA

FED. MFR. CODE 91929

# SWITCH - BASIC

CATALOG LISTING  
**BZ-2RW82-A2**

APA1000

**M BZ-2RW82-A2**

PAGE 1 OF 1

DRAWING NUMBER

ISSUE 10

REPLACES

RELEASE NO.

CHECK

23 AUG 05

RJ

CHECK

11 APR 62

CHECK

DAW

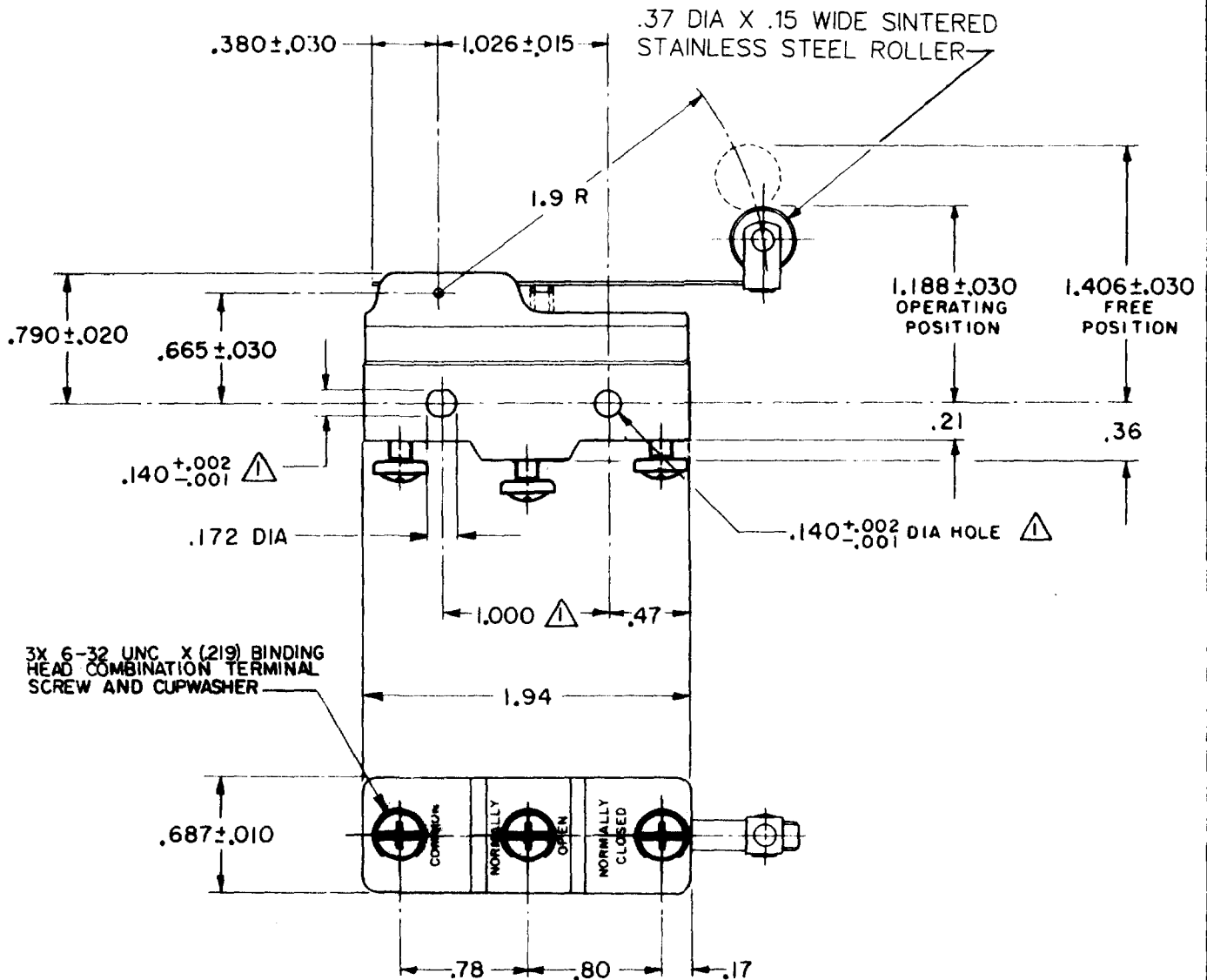
CHECK

27 MAR 62

GCH

**REVISIONS**

A	CO 16736	GCH 27 MAR 62
B	CO34306	DJW 17 JUL 75
C	CO- 73287-B	DHD 19 MAY 93
D	CO- 75204B	KDR 1 FEB 94
E	CO- 77589	MAM 29 MAR 94
F	CO93346	DLT 11 SEP 98
G	0015139	TSG 23 AUG 05



**NOTE**  
 ▲ MOUNTING HOLES WILL ACCEPT PINS OR SCREWS OF .139 MAX DIA ON 1.000±.002 CENTERS

THIS DRAWING COVERS A PROPRIETARY ITEM AND IS THE PROPERTY OF MICRO SWITCH, A DIVISION OF MINNEAPOLIS-HONEYWELL REGULATOR CO. THIS DRAWING IS NOT TO BE COPIED OR USED WITHOUT THE APPROVAL OF MICRO SWITCH.

CHARACTERISTICS	ELECTRICAL DATA	SCALE FULL	
OPERATING FORCE ----- 3 1/2 OZ MAX	CONTACT ARRANGEMENT S P D T	DO NOT SCALE PRINT	
RELEASE FORCE ----- 3/4 OZ MIN	-L96- 16A-125, 250, OR 480 VAC 1/2 A-125 VDC; 1/4 A-250 VDC 1/8 HP-125 VAC; 1/4 HP-250 VAC -L288- -L306- -L315-	UNLESS OTHERWISE SPECIFIED DIMENSIONS ARE IN INCHES <b>TOLERANCES ARE:</b> ONE PLACE (.0) ±.030 TWO PLACE (.00) ±.015 THREE PLACE (.000) ±.005 ANGLES ±	
DIFFERENTIAL TRAVEL ----- .004-.040		CE EN 05 EC 16A 250V ~ T85 5E4	WEIGHT .076 LB
OVERTRAVEL ----- .156 MIN			

FORMTEK  
FO-90378

DRAWN